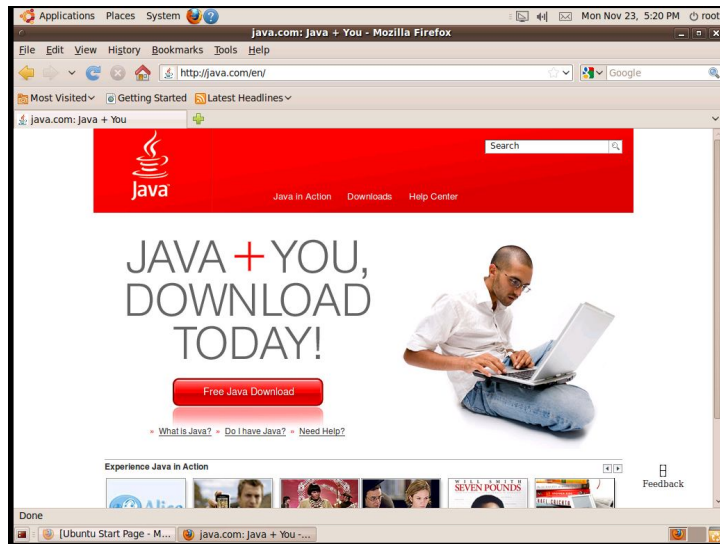


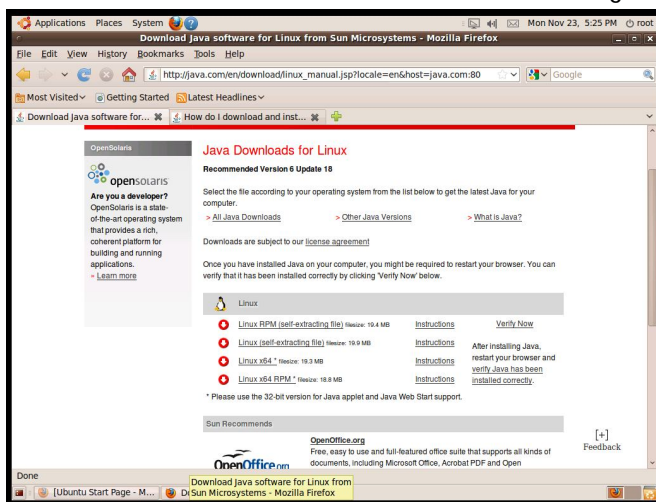
# Installing CyteSeer on Ubuntu (Should be root user or have root user level permissions)

## 1. Download Java (skip if recent version 1.5 or above is installed)

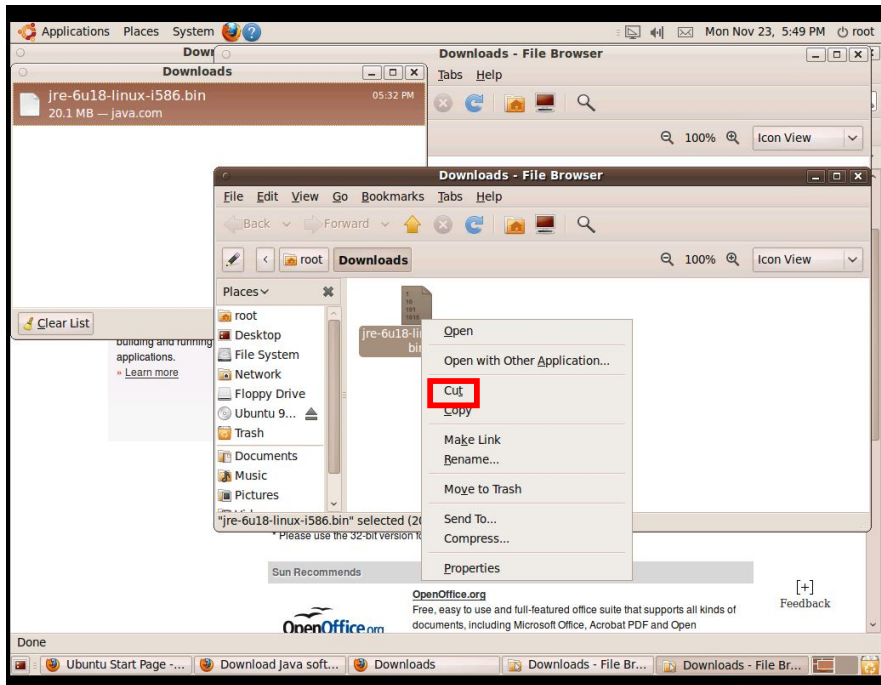
- a. Open Firefox (or any Internet Browser)



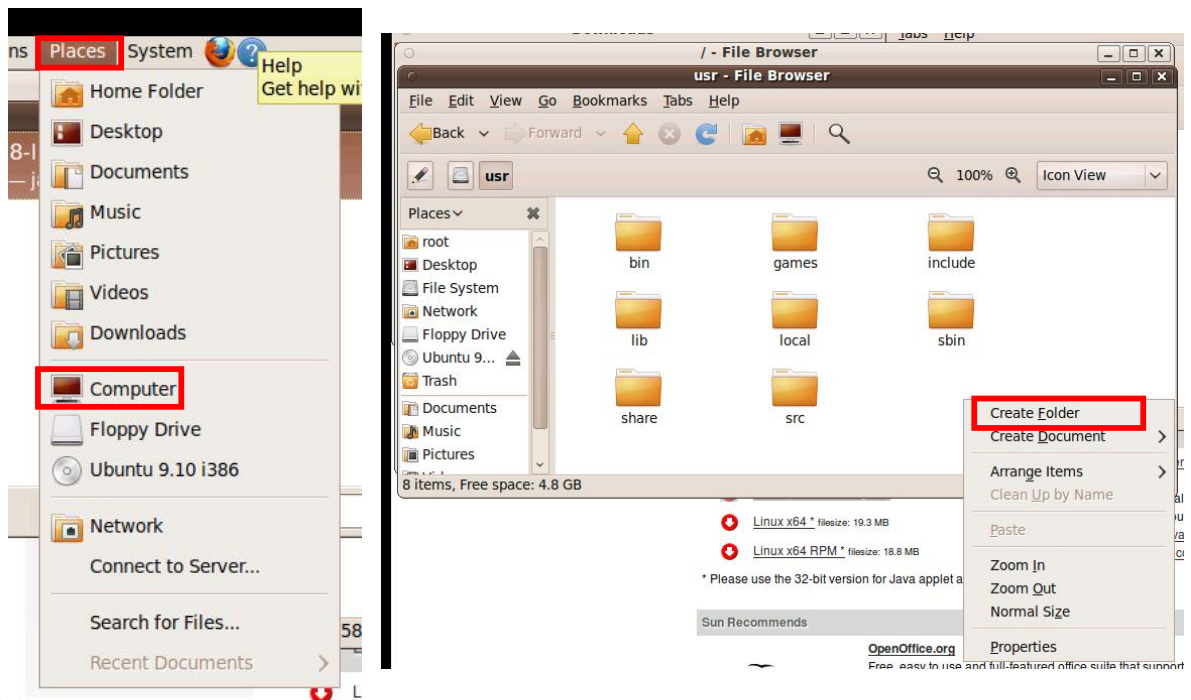
- b. Go to URL: <http://java.com/en>
- c. Click "Free Java download". Should then be viewing the "Java for Linux Download" Page.



- d. From Here Select the appropriate download for 32bit or 64bit versions of JAVA. Also whether to use "RPM" Self Extracting or Regular Self Extracting Version. Instructions for installation are included next to the download link. Continue to Step 2 after Java installation is Finished
- e. FOR JAVA 32 LINUX SELF EXTRACTING ONLY: Click on "Linux (self-extracting file)" download and save file.
- f. From the Download Location Right-Click and "Cut" File "Jre-6xxx-linux-i586.bin". (Firefox Right-Click file in Downloads Window and Click "Open Containing Folder" then proceed to Right-Click and Cut)

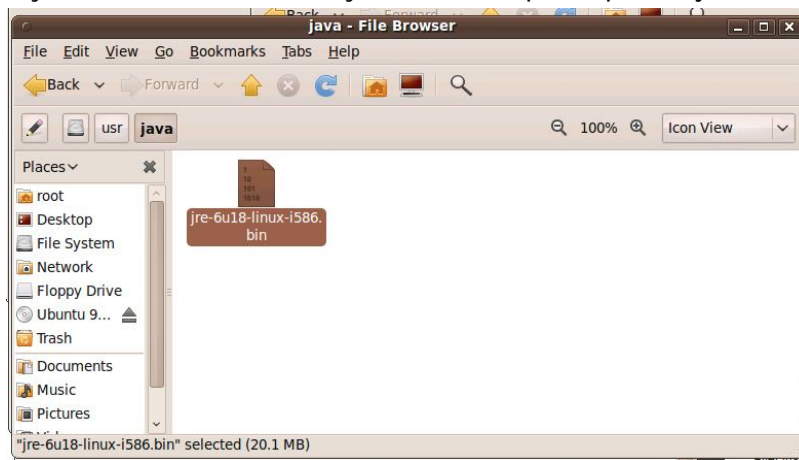


- g. At the top of the screen Click "Places" then "Computer". In the Computer File Browser Double Click "Filesystem" then "usr". Right-Click in an open white area, Click "Create Folder". Label Folder "Java" and Press 'Enter'





- h. Double Click "Java" Folder. Then Right Click and Click "Paste". This will place the java file into the directory. (NOTE: If having permission issues with creating folders or pasting file, you can place file in any location and install but CyteSeer will require a path to java files during installation)



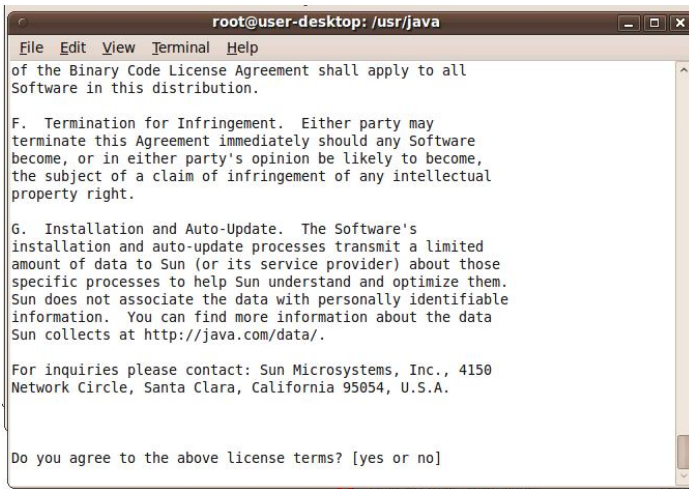
- i. At the top of the screen Click "Applications" then "Accessories" then "Terminal"
- j. After the terminal windows is open, type in `cd /usr/java/` (or specific location of jre\* file) then press 'Enter'



- k. Next type in `sudo chmod a+x jre-6xxx-linux-i586.bin` (be sure to type in the exact file name) and press 'Enter' (NOTE: May be able to use without `sudo` depending on permissions)
- l. Next type in `sudo ./jre-6xxx-linux-i586.bin` (type in exact filename) and press 'Enter'. (NOTE: May be able to use without `sudo` depending on permissions)



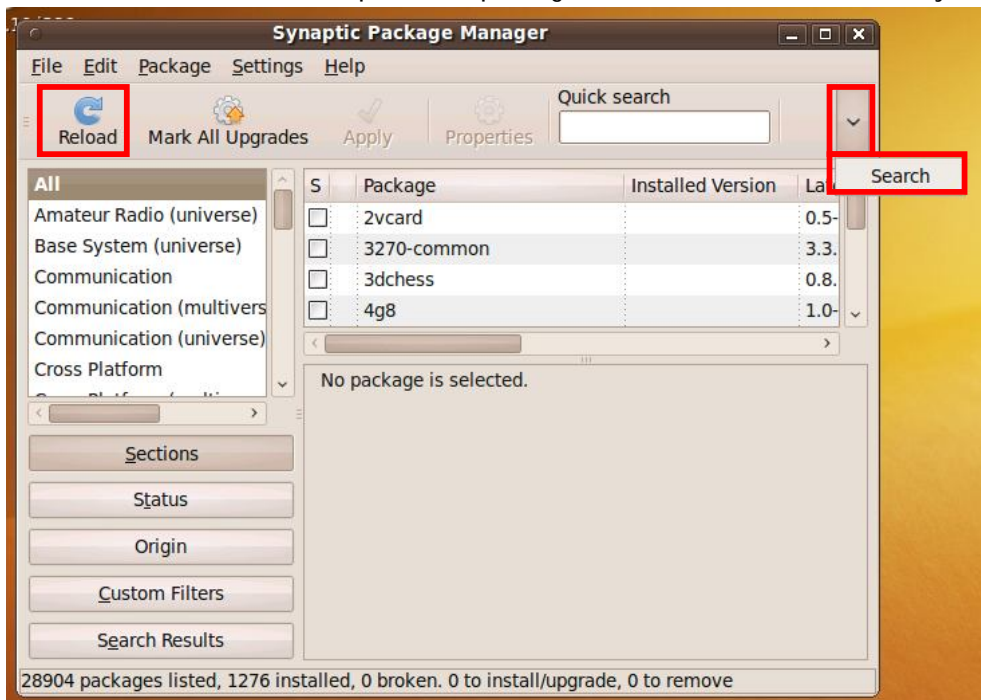
- m. Installation should commence. Press 'Spacebar' multiple times until question appears regarding license agreement. Type **yes** and press 'Enter'.



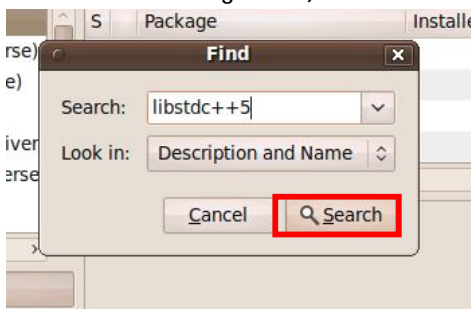
n. Close Terminal Windows after Complete.

2. Installing libstdc++.so.5 This is required prior to installation of CyteSeer on Ubuntu Linux.

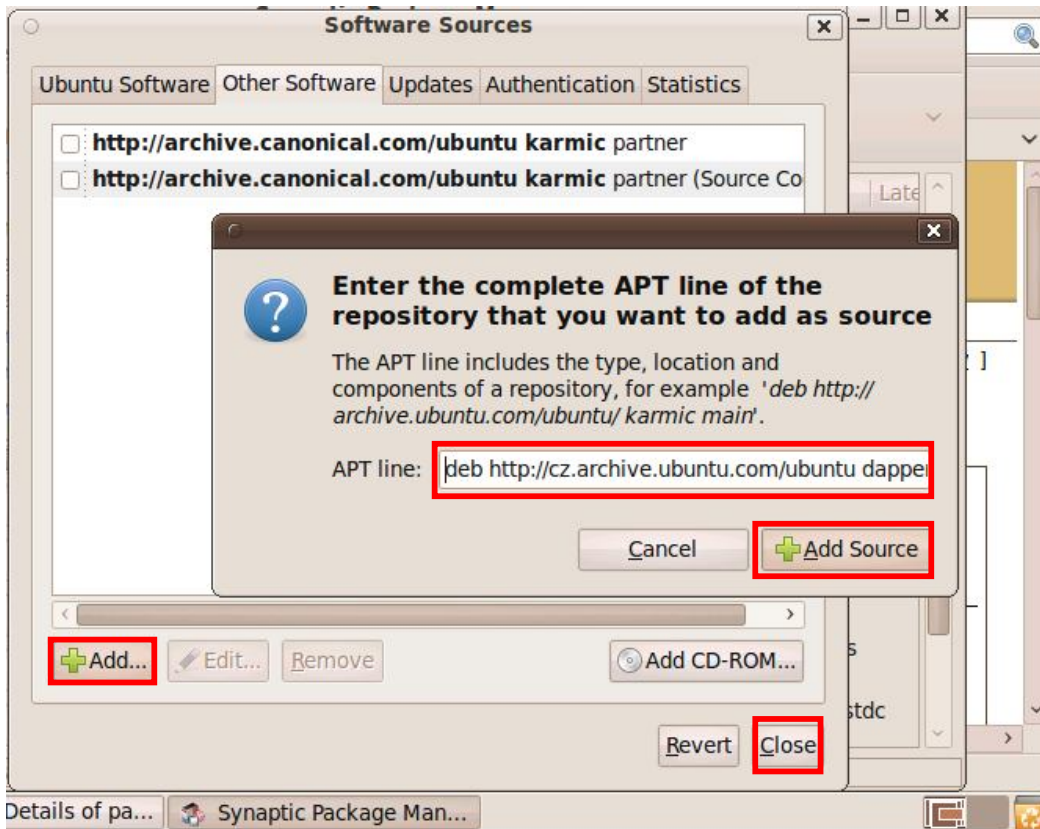
- a. At the top of the screen. Click "System" then "Administration" then "Synaptic Package Manager".
- b. Click the "Reload" Button to update the package list. Then click 'down arrow symbol' and Click "Search"



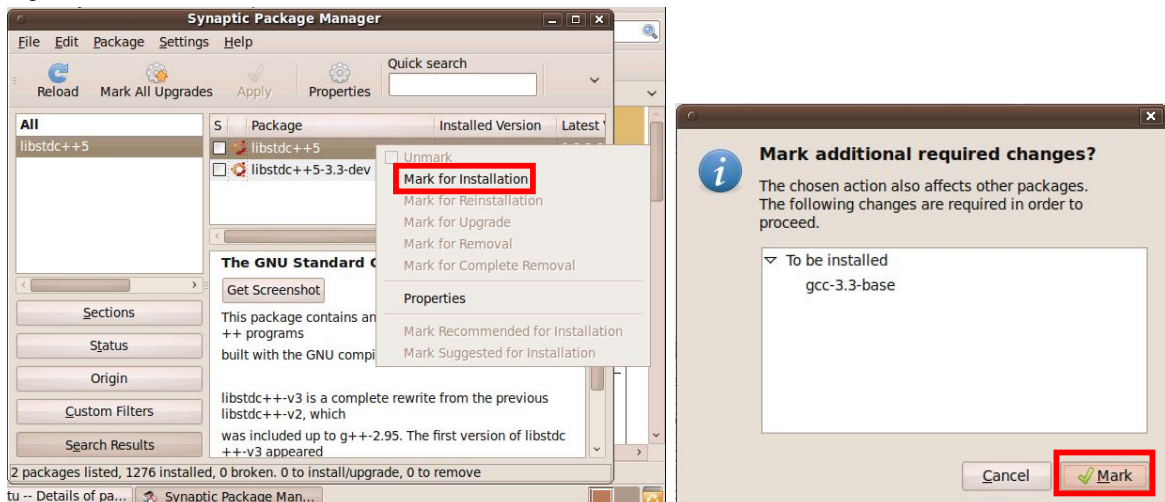
c. In the Search windows type **libstdc++5**. Click "Search". (Continue to part d. if results show libstdc++5. If not check following **NOTE**)



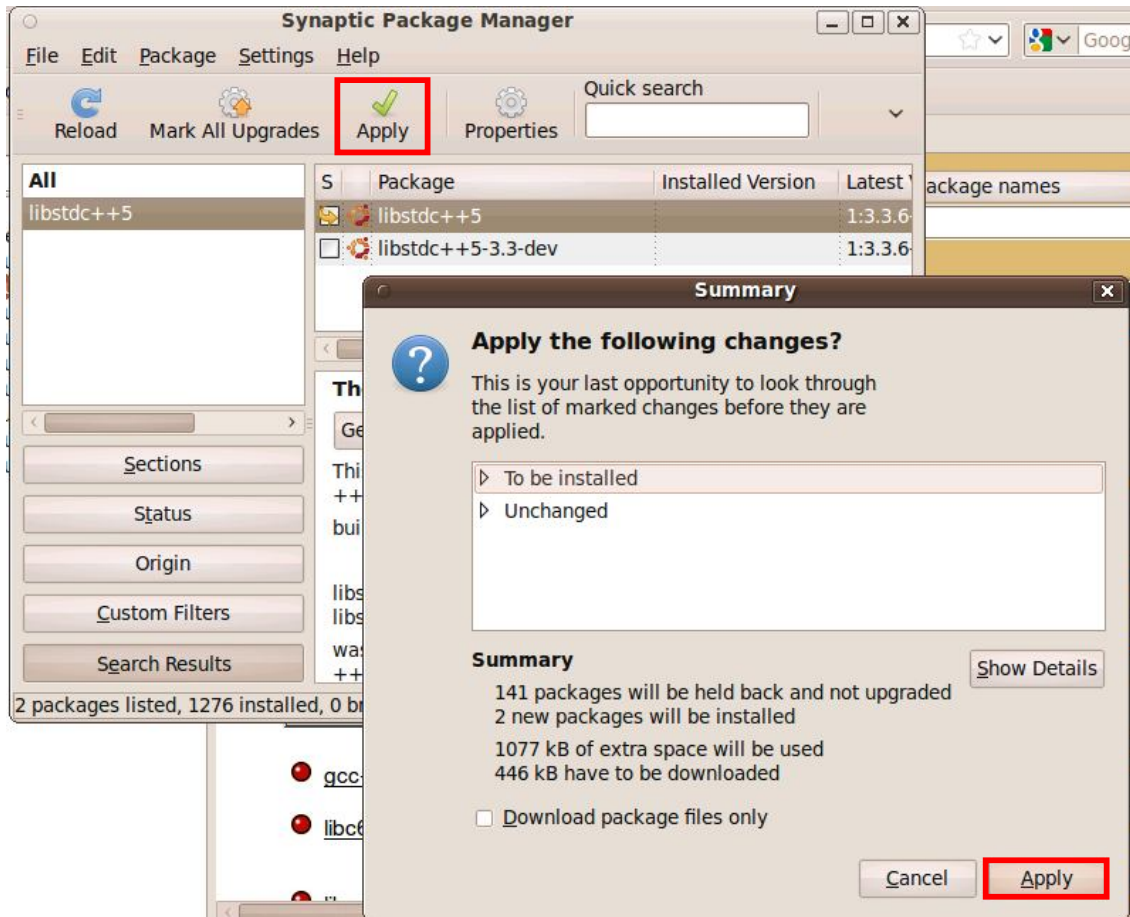
**NOTE:** IF NO RESULTS SHOW: Click "Setting" then "Repositories". Click "Other Software" Tab then Click "Add" Button. Type in APT line **deb http://cz.archive.ubuntu.com/ubuntu dapper main** or try **deb http://cz.archive.ubuntu.com/ubuntu jaunty main universe** . Click "Add Source" then Click "Close". You will then repeat steps b. and c. (see image below)



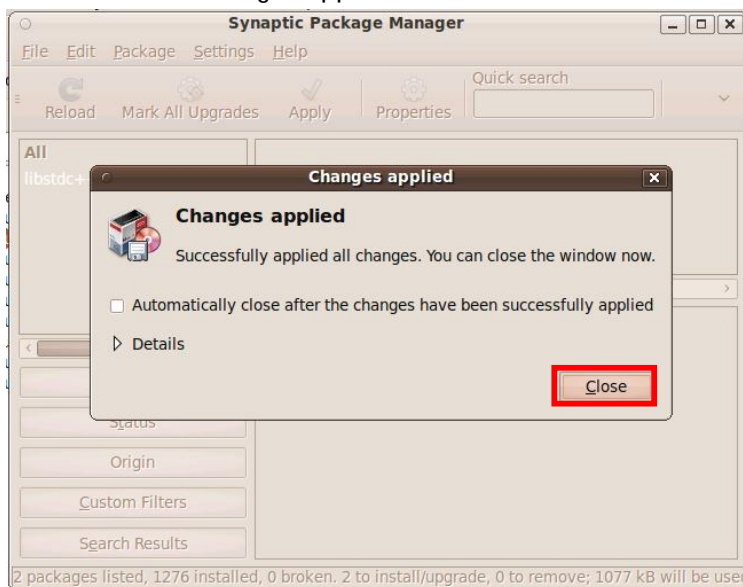
d. Right-Click results "libstdc++5" and Click "Mark for Installation". On the next window Click "Mark"



- e. Click "Apply". When the Summary Window Appears Click "Apply" again. Allow the installation to commence.



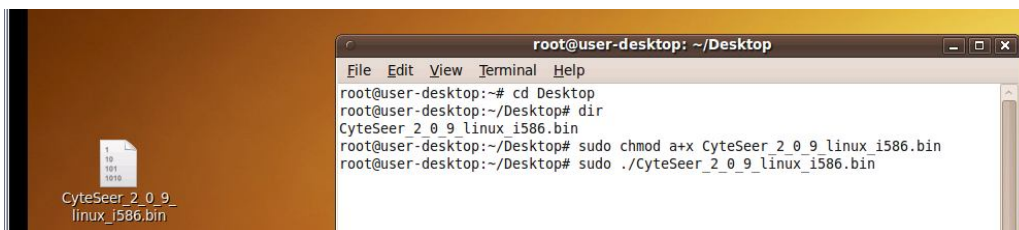
- f. Click "Close" on Changes Applied window and Click "X" to close the Synaptic Package Manager



### 3. Installing CyteSeer 2.0.x

NOTE: This process is assuming you have already registered on the Valasciences.com website and have downloaded the CyteSeer Linux installation file. If not please visit <http://valasciences.com/files/> and register to download or enter login information near the bottom of the page to allow access to downloads.

- a. With the CyteSeer Linux file downloaded (CyteSeer\_2\_X\_X\_linux\_i586.bin or CyteSeer\_2\_X\_X\_linux\_x64.bin), Go to the top of the screen and Click "Applications" then "Accessories" then "Terminal".
- b. In the terminal windows you will then type in the directory that the CyteSeer Bin file is located. For this example it on the Desktop. Type the command **cd Desktop** then press 'Enter'. Type **dir** then press 'Enter' (this will confirm the file is in that directory). Type **sudo chmod a+x CyteSeer\_2\_X\_X\_linux\_i586.bin** (type in the correct file name) then press 'Enter'. Type **sudo ./CyteSeer\_2\_X\_X\_linux\_i586.bin** then press 'Enter'. (NOTE: May be able to use without sudo depending on permissions)



- c. Allow the installation to commence. When complete close the terminal window.  
**NOTE:** If CyteSeer installation cannot find the path for Java, it may request you to manually enter the path where java was installed. Ex. **/usr/java/j2sdk/bin/java**
- d. Follow On-Screen instruction for CyteSeer Installation.